

UD 500

Standard Equipment

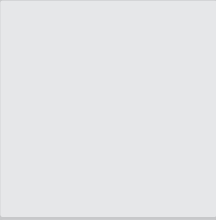
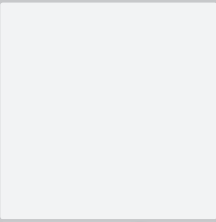
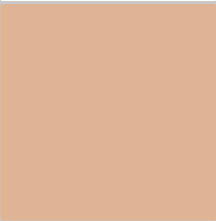
Dental unit U 3000/U 3000 EX with:
Rack for two standard trays
Functions that can be preset using foot control
Hygienic plastic-film keyboard with digital display and chair operation
Chip blower for all motors and turbines
Spray for all drives, non-suckback
Spray water heating in unit body
Stable, easy-to-move frame

Supply unit with:
Low-voltage power supply
Water heater
Central switch
DVGW separator/intensive disinfection
Bottle system for U 3000 EX

Mobile U 739 Waterunit with:
Filter sieve, non-drip
Position selector (suction valve)
Controller for rinsing water and mouth rinse glass filler
Small suction hose with hinged support
Large suction hose with hinged support
Safety switch for hose holder
Removable spittoon bowl
Stable, easy-to-move frame
ULTRADENT selection tray with 4 holders, pivoting
Water-rinsed suction hoses
External supply hose

UD 500 operating chair with:
Total length of chassis (vertical backrest) – 1000 mm
Total length of chassis – 700 mm
Patient weight (maximum) – 200 kg
Weight of UD 500 (depending on options) approx. 150 kg
Minimum height of seat upholstery – 500 mm
Maximum working height with horizontal backrest – 960 mm
Head rest, electronically adjustable, extensible, tiltable
Three-position braking system
- All wheels free
- One fixed castor
- All wheels locked
29.5 V battery (19 watts)
Battery charging time approx. 4 hours

Colors:
RAL 9010 pure white finish



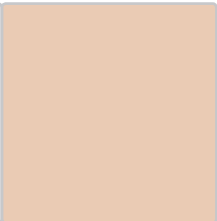
Additional Equipment (Extract)

UD 500/U 3000 EX/U 739
Surgical armrests, right and/or left
Light micro motor KL 7S LED
Light micro motor K 2
Light turbine fitting with/without adjustable speed
Air/water syringe, 3-way
Air/water syringe, 6-way
Micro motor, surgical, autoclavable
Spittoon valve
Permanent disinfection unit for fresh water
X-ray viewer 15 x 30 cm
Automated separator
Pivoting spittoon bowl
Sterile saline pump
Tartar remover, piezoceramic
Tartar remover, piezoceramic, with light (LED)

ULTRADENT VISION (only available with U 3000)
TFT flat-screen monitor UV 5001, 19 Inch
Ultracam UV 5080 intraoral camera
PC adapter (5 m to 15 m cable length)
Additional module for PC control

Solaris LED operating lamp
8,000 – 35,000 Lux, 4,200° – 6,000°K
20 W, removable autoclavable handles

Dentist's stools
Ei-UD
Pluto



Brochure no.: 364220 | Date: June 2012
We reserve the right to make technical changes
and accept no liability for typesetting or printing errors.

Concept and layout by mms-die-agentur.de

ULTRADENT
DENTAL UNITS. MADE IN GERMANY.

Dental-Medizinische Geräte GmbH & Co. KG
D-85649 Brunnthal | Eugen-Sänger-Ring 10
Tel. +49 89 420 992 - 70 | Fax +49 89 420 992 - 50
www.ultradent.de | info@ultradent.de

YOUR ULTRADENT SPECIALIST

ULTRADENT
DENTAL UNITS. MADE IN GERMANY.



UD 500
Maxillofacial Surgery | Oral Sergergy | Implantology

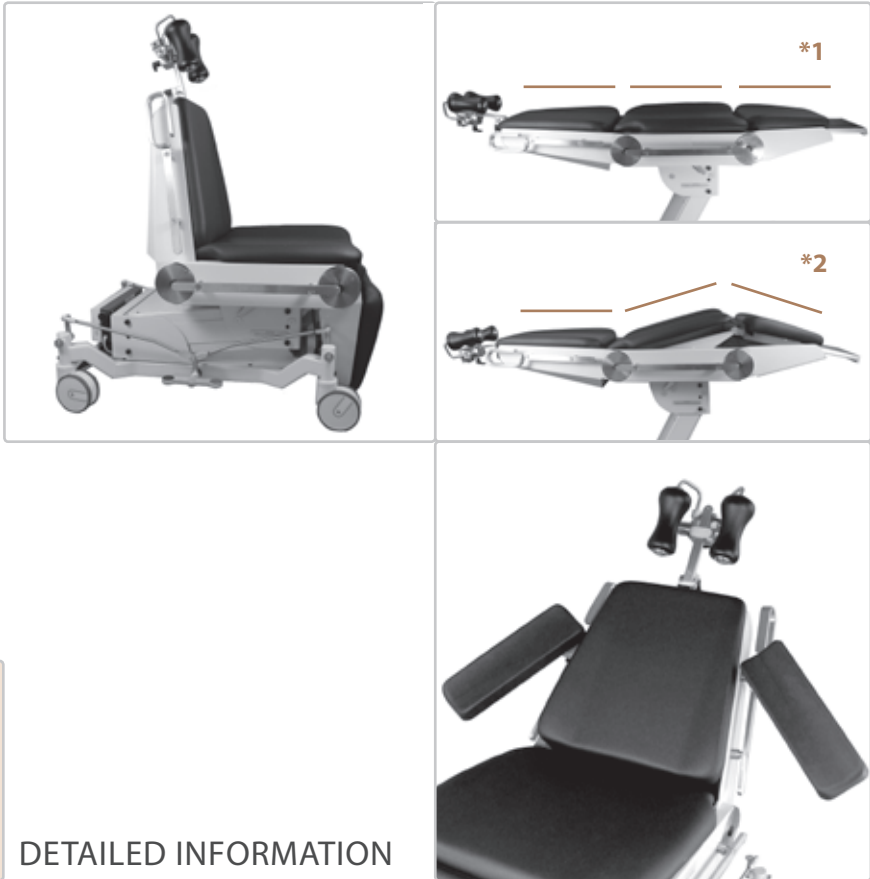
UD 500
THE SURGICAL CONCEPT.
PRECISION. ERGONOMICS. HYGIENE.

THE FIRST COMPLETE AND EXPERT OPERATING
CONCEPT. FUNCTIONALITY AND ERGONOMICS
FOR SURGERY.

This new operating concept combines expertise in dental equipment construction with specialist surgical experience. Consisting of a professional surgical treatment chair, the U 3000 or U 3000 EX dental unit and the mobile U 739 spittoon, this workstation combines all the desired benefits for oral and maxillofacial surgery and implantology. Conventional patient chairs do not fulfil all the surgical requirements for treatment equipment. For this reason, ULTRADENT is for the first time providing a special treatment unit that meets the needs of both surgeons and patients.

DETAILED INFORMATION

Like other special units, such as Fridolin for pediatric dentistry, this gives the practice a unique appearance. This supports a relationship of trust with the patient as it makes the specialist's expertise visible.

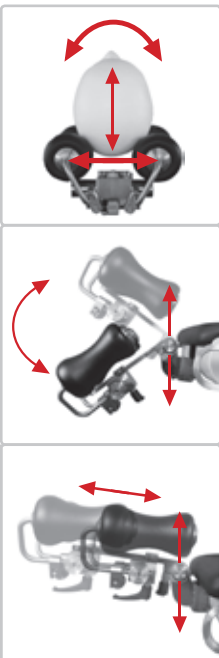


THE CHAIR. FOR PROFESSIONAL SURGERY.

The patient chair is tailored to the specific needs of dentists and patients. It provides free access from all sides. The patient can get into it in a seated position. The wide vertical range of movement allows the surgeon to treat the patient both while sitting and standing. Battery operation means the chair can be used independently and the floor remains free of cables and is thus easy to clean. The surgical treatment chair has a flat *1 or an anatomically angled *2 surface.

ARMRESTS.
FOR EXTRA COMFORT.

Comfortable and individually adjustable armrests on both sides increase comfort and meet all the requirements of anesthetists, in particular.



THE HEADREST.
FOR MORE FLEXIBILITY.

The special, patented headrest design provides safe, comfortable support for the patient's head in every conceivable position. The upholstery, made from memory foam, adapts precisely to every head shape within seconds and holds the head in a stable position. This is particularly beneficial for long treatment times and prevents unintentional movement of the patient's head. The headrest heights can be set using a motor.

THE CHASSIS.
FOR INCREASED SAFETY AND MOBILITY.

The solid safety chassis with four double wheels ensures secure support and a high level of comfort when the chair is moving. A sophisticated braking system can be set in three stages – all wheels free, all wheels fixed for the chair to stand securely and a position that fixes two wheels in the straight-ahead position for controlled movement. Battery operation provides maximum mobility, allowing the patient to be moved to the treatment room quickly and easily.



U 739

U 739.
THE MOBILE WATER UNIT.

The four holders on the assistant's unit can be individually fitted with instruments. The spittoon bowl is removable. The control console, with its new membrane switchkeyboard, is movable. A special surgical suction system can be added as an option.

U 3000 EX

U 3000 EX. THE DENTAL UNIT FOR SURGEONS.

The dental unit provides six holders and a stable, safe chassis. Operation with a pressurized water bottle ensures independence. (See U 3000 brochure)



UD 500 operating chair
with U 3000 EX dental unit,
U739 waterunit and F 9 footcontrol.
Finish: RAL 9010 pure white, Upholstery: 1007 T black.